

GILMAN PIRATES ROCK!

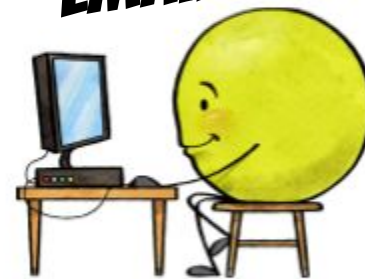
Middle School SCIENCE

with Mrs. Steinbach 2025-2026



- Develop a broad base of science content knowledge for future study in science.
- Obtain the skills to design, carry out, and report laboratory investigations.
- Meet the science core curriculum content standards for students completing middle school science in WI.
- Create the habits of a scientist.
- Nurture a love of learning and of doing science!

EMAIL



Students and parents can contact me via email at tsteinbach@gilman.k12.wi.us with any questions or concerns about science class or academic progress.

SUPPLIES



All students are required to have:

- two composition, college-ruled notebooks
- pencils

Note: Classroom sets of colored pencils, markers, scissors, and glue will be provided. Some calculators will be available as well. If you choose to purchase a calculator, please purchase a scientific calculator similar to the TI-30Xa for all future middle and high school science classes.



WHAT WILL WE BE LEARNING?

We hope that you find a way to follow your curiosities and discover some amazing nooks of science for yourself! Here is a list of some of what we will cover:

- Laboratory Safety, Equipment, and Technique
- Scientific Inquiry and Experimental Design
- Scientific Writing and Argumentation
- Microbiomes
- Metabolism
- Genetic Traits
- Thermal energy
- Ocean, Atmosphere, and Climate
- Weather Patterns

PIRATE SCI



The class website, www.PirateSci.com, should be of use to you throughout the school year. There will be a weekly calendar of what we are doing in class each day on the [Assignment Board](#) webpage.

AMPLIFY SCIENCE



GRADING



Your **grade** will be determined by making a number of **checks for scientific understanding, as well as application and critical thinking skills**. Through these assessments, your mastery or proficiency level will be determined. Your proficiency level will then be converted to a percentage equivalent/point value for Infinite Campus calculation purposes. For example:

- 10 = mastery, 8.5 = proficient, 7.5 = approaching proficiency, 6.5 = developing proficiency
- 100-90 = mastery, 89-80 = proficient, 79-70 = approaching proficiency, 69-60 = developing proficiency

You should **choose to complete any REDO assessments** for full credit, unless the assessment is turned in late.

Your quarter grade will be calculated as follows:

Scientific Practice (“Scrimmage”)	Scientific Performance (“Game”/”Match”/”Meet”)
<p>These assessments are like a scrimmage. They tell you and I whether you are making progress in your learning.</p> <p>These assessments will be reviewed and graded by you and/or I.</p> <p>Selected assessment scores in this category will be worth 10%.</p> <p>Examples of such assessments include: Amplify pre- and post-unit assessments, Amplify homework, sum it up homework, investigate checks, STEM project checks, etc.</p>	<p>These assessments are like the final big game, match, or meet. We use them to see what you know and/or can do.</p> <p>These assessments will be reviewed and graded by me.</p> <p>Selected assessment scores in this category will be worth 90%.</p> <p>Examples of such assessments include: some teacher chosen scrimmage assessments, CER work, tests, lab practicals, etc.</p>

Try As Hard As You Can to be in Class Everyday!

Your absence does not excuse you from class work. Please check the **Assignment Board** on our **Pirate Sci website** to see what you missed!

It is your responsibility to get missed papers and assignments on the day you return and submit the assignment(s) to Mrs. Steinbach by the due date plus however many days you were absent. If an assignment was given before your absence, that assignment is to be completed and returned on the day you return to school.



Coursework must be turned in when requested. Doing otherwise is detrimental to your academic progress. To help, in most cases, you will be provided with a floating deadline. For example, your lab scientific explanation will be due on Monday, Tuesday, or Wednesday of next week. An extension may be given for an emergency/special situation. **Our late work policy is as follows:**

- Work submitted late will be allowed a maximum score of 80%.
- **Unit work will not be accepted after the completion of that unit** with the exceptions of tests and projects and/or teacher approval.

RULES AND CONSEQUENCES



Our class will be conducted under the discipline code published in the Gilman Student Handbook. In addition, there will be particular emphasis on the following:

1. **TAKE CHARGE OF YOUR LEARNING...** Have pride in yourself and your science studies. Be curious and ask questions. Dig in, stay focused, and contribute your thoughts and skills. Hard work today will help you to have the future life you are dreaming of.
2. **BE PRESENT AND PREPARED...** Don't miss a day to learn something new and become a better person. Be present for scheduled class periods and participate fully from start to finish. Be prepared by doing the work necessary to achieve the learning (e.g., take notes, complete practice problems, etc.). Don't let your personal device(s), etc. distract you. Presence and preparedness are essential to maximize your learning experience.
3. **BE SAFE IN THE LAB...** Your safety and the safety of your classmates and I is important. You will be required to sign and abide by a student safety contract, as well as always follow class lab/activity directions in order to participate fully. If you fail to do so, you will not be allowed to participate in laboratory activities and you will not have opportunity for make-up.
4. **TAKE CARE OF OUR CLASSROOMS...** Help me to keep our resources, supplies, and lab materials in great condition. I love our classrooms and I hope you do too. Keep your tables and lab stations clean and free of doodles. (If you can't resist the urge, doodle in your notebook.) If something is broken, report it to me right away. If the lighting or room temperature is not quite right, let me know and I will do my best to get it fixed. We will work best in a nice, neat, and clean classroom.

Consequences for poor decisions:

- ★ First Offense... Warning (unless your behavior is chronic or you are jeopardizing safety)
- ★ Second Offense... School detention (and a call home depending on the offense)
- ★ Third Offense... Consequences determined by the Principal

PROFESSIONALISM POLICY

CONDUCT YOURSELF PROFESSIONALLY WITH KINDNESS AND INTEGRITY... Because learning is currently our number one occupation, professional appearance and conduct matters. **Be a team player.** Share your ideas and talents with your classmates, but do so with kindness and integrity. Academic dishonesty (e.g., cheating and plagiarism) in any portion of your academic work is a serious offense. More importantly, academic dishonesty will hurt you in your attempt at future coursework that relies on the learning.

A NOTE FROM MRS. STEINBACH



I expect you to improve and exercise your *good character*. Students with *good character* exhibit appropriate behavior, come to class with a prepared with a positive attitude, are pleasant towards their classmates and teachers, and do their best work at all times.

**I believe in you and
your ability to be successful!**